



# ATANAYA HOTEL

PRESENTATION

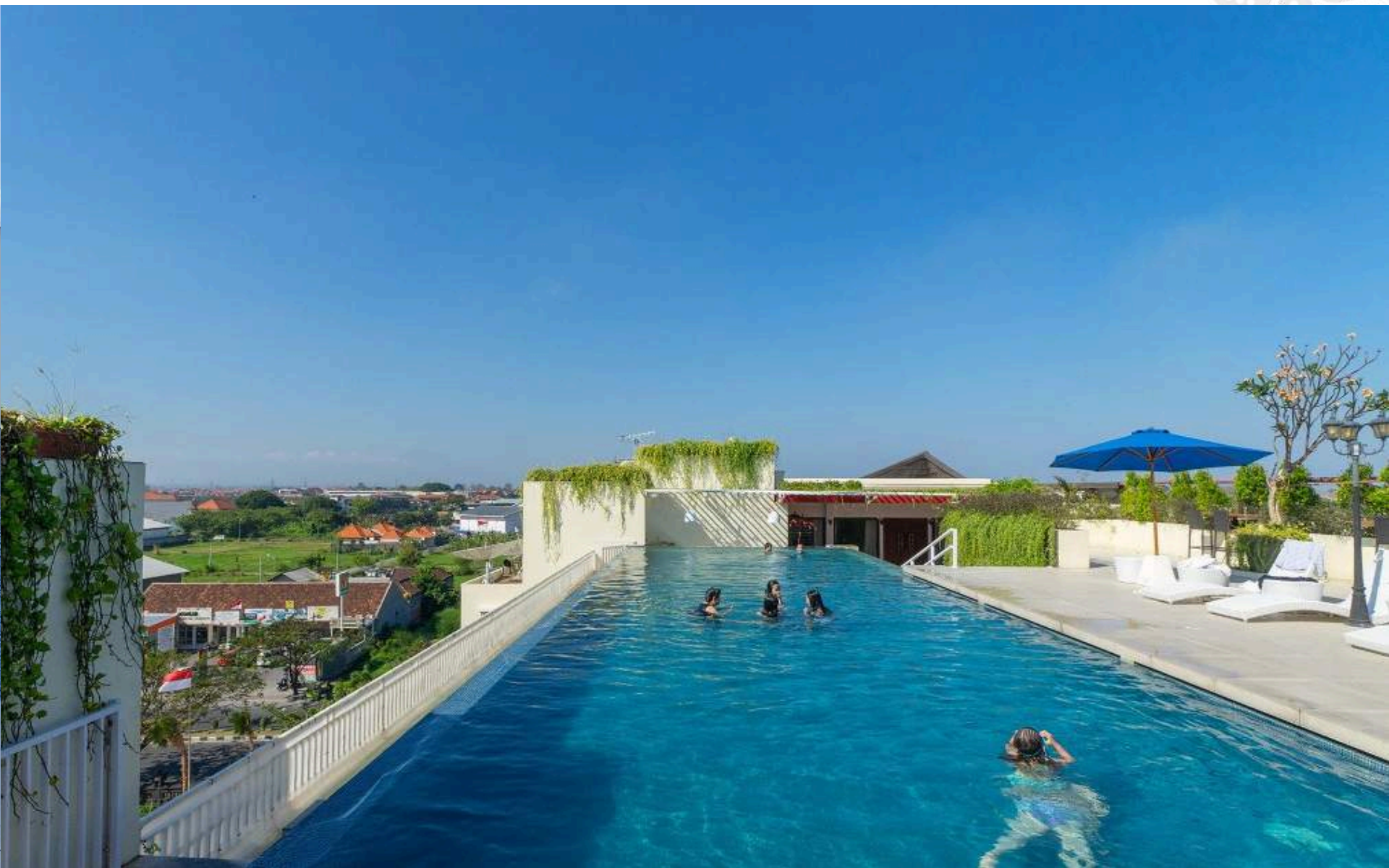
[www.atanaya.com](http://www.atanaya.com)

## Atanaya Hotel

---

1

The Atanaya Hotel features 109 peranakan themed guestrooms, 5 meeting rooms, Saung Dahar Balagra Restaurant, Brewu Chill Cafe and Sky 8 Roof Top & Pool in the heart of Bali tourism spots.



# Atanaya Hotel

---

Strategically located on Sunset Road 88A, next to Krisna giftshops, The Atanaya is easily accessible from Ngurah Rai International Airport, Kuta, Legian, Seminyak and other Bali's tourism hotspot.



## Atanaya Hotel

---

# Facilities



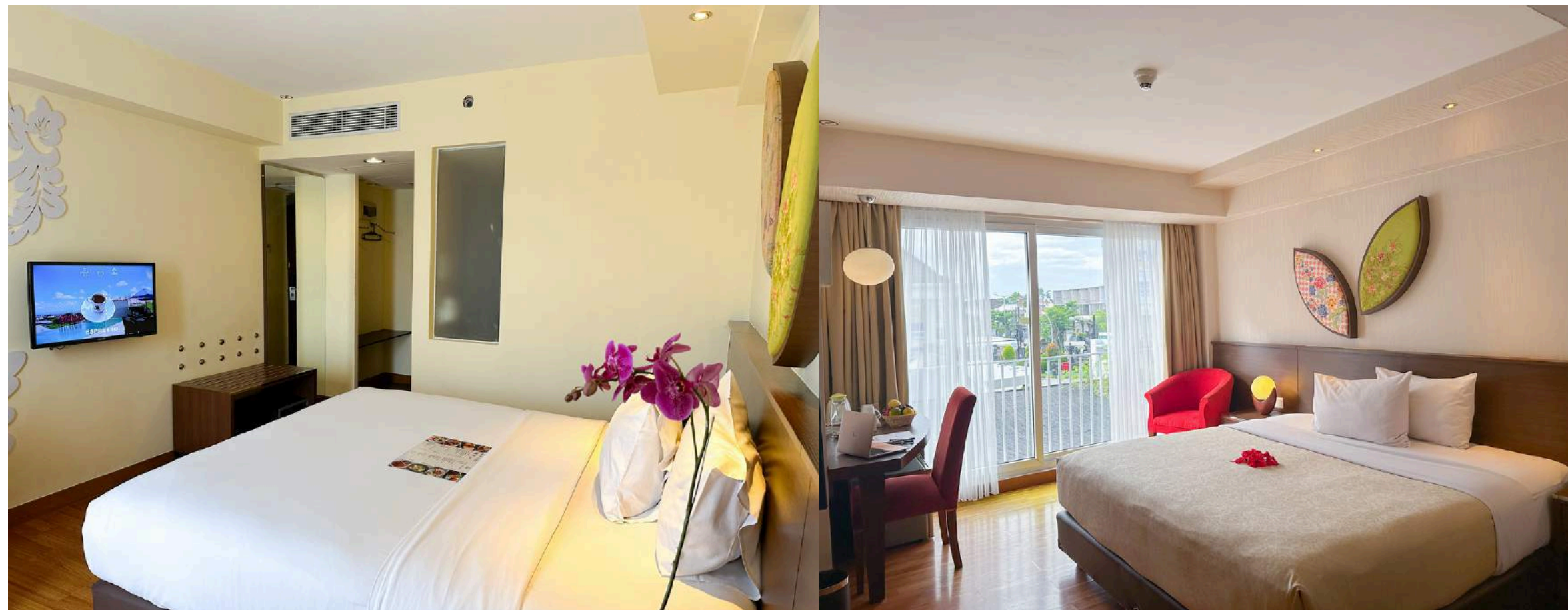
MEETING ROOMS - RESTAURANT - CAFE - ROOFTOP POOL

# Our Function Room

MEETING | WEDDING | GATHERING



## Rooms



## Atanaya Hotel

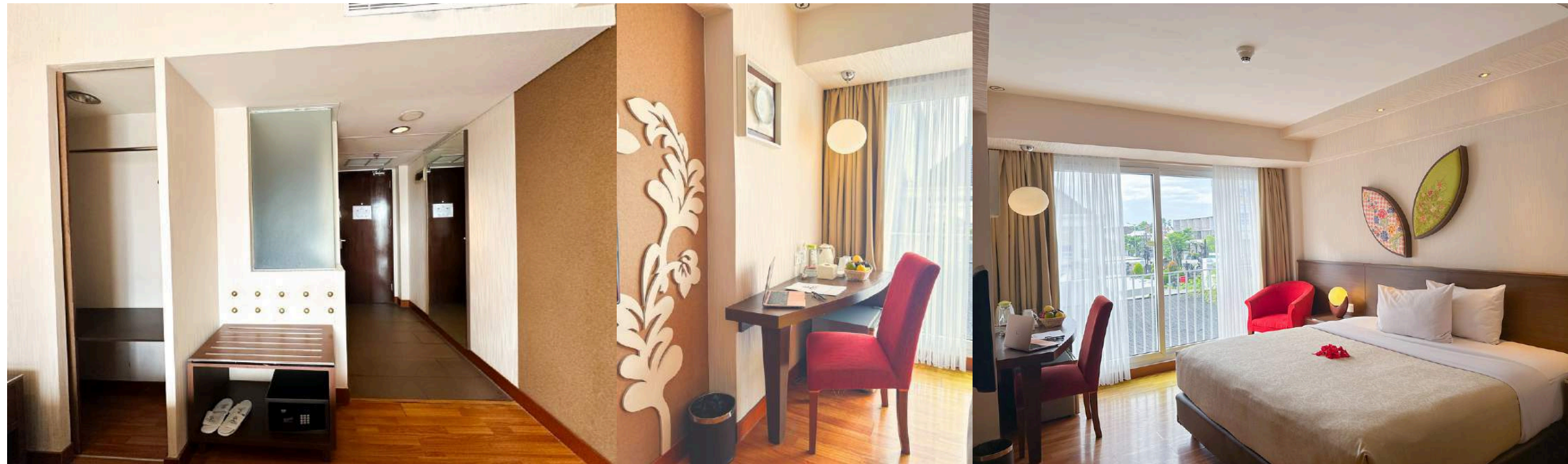
---

### Deluxe Room

Deluxe rooms offer comfortable bed and bathroom to ensure your time for rest and relaxation is highly enjoyable.

- Room size 23m<sup>2</sup>
- Working desk
- 32" LCD TV
- Internet connection
- Tea & coffee maker
- Safety Box
- Shower and bath amenities





## Executive Room

The Executive Room is designed to align with the hotel's concept, offering a warm and welcoming atmosphere.

- Room size 26m<sup>2</sup>
- Working desk
- 32" LCD TV
- Internet connection
- Tea & coffee maker
- Safety Box
- Shower and bath amenities
- Free welcome drink

# Junior Suite

Atanaya's Junior Suite Features an impressive one King Sized bed and one Single Bed and comfortable spacious area.

- Room size 42m2
- Working desk
- 32" LCD TV
- Internet connection
- Tea & coffee maker
- Safety Box
- Shower and bath amenities
- Free afternoon coffee break





## Family Suite

The Family Suite is designed to welcome guest with a residential feeling of comfort and elegance, with three bedroom, and bathrooms are included in a spacious layout

- Room size 68m2
- Working desk
- 32" LCD TV
- Internet connection
- Tea & coffee maker
- Safety Box
- Shower and bath amenities
- Free afternoon coffee break

# Atanaya Hotel

---



## Meeting Rooms

## **Atiharsa Meeting Room**

Atiharsa meeting room located on the top floor adjacent to Sky Bar & Pool. Ideal for private meeting or special events.

Room Size:

13,7x 6 m<sup>2</sup>H 2,7 | Fully Air Conditioned | Latest Audio Visual Facilities



## **Anjaya 1&2 Meeting Room**

Anjaya 1 and Anjaya 2 are located on the ground floor next to Balagra Restaurant. These twin rooms can be combined into one Big Function space.

Room Size:

17,5 × 5m<sup>2</sup> H2,9m | Fully Air conditioned | Free Internet Wifi Connection | Latest Audio Visual Facilities.





## **Green Balagra Meeting Room**

Green Balagra meeting room is located on the ground floor, Our spacious Green Meeting Room is ideal for large events, accommodating up to 150 guests comfortably.

Room Size:

21x7 x 2,8 | Fully Air conditioned | Free Internet Wifi Connection | Latest Audio Visual Facilities.

## **Anjaya 3 Meeting Room**

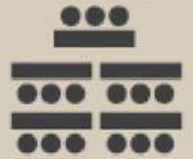



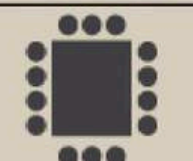

Anjaya 3 is located on the ground floor, just opposite Anjaya 1 and Anjaya 2 placed in the corner, this quiet meeting space is an ideal for a more private events.

### **Room Size:**

- 7×5m<sup>2</sup>H2,9m
- Fully Air conditioned
- Free Internet Wifi Connection
- Latest Audio Visual Facilities



## ROOM DIMENSION, VENUE LAYOUT & CAPACITY

	ANJAYA 1 & 2	ANJAYA 1	ANJAYA 2	ANJAYA 3	ATIHARSA	GREEN BALAGRA	SKY BAR & POOL
DIMENSION (METER)	17,5 x 5 x 2,9	7 x 5 x 2,9	10,5 x 5 x 2,9	7 x 5 x 2,9	13,7 x 6 x 2,7	21 x 7 x 2,8	21 x 7
 CLASS ROOM STYLE	60	24	36	24	42	110	-
 THEATER STYLE	84	36	48	36	80	200	-
 U-SHAPE STYLE	54	18	27	18	33	60	-
 ROUND TABLE	40	16	24	16	40	80	49
 HOLLOW / BLOCK TABLE	54	24	30	24	42	66	-
STANDING PARTY	100	30	40	30	100	150	150
 DOUBLE U-SHAPE STYLE	93	-	33	-	60	102	-

## **Sky 8 Bar & Pool**



Enjoy the sun, stars and a breathtaking view while dipping in our Rooftop Pool with a sun deck, bar and adjacent function space. Our Sky 8 is an ideal venue for any occasion.

# Atanaya Hotel

---

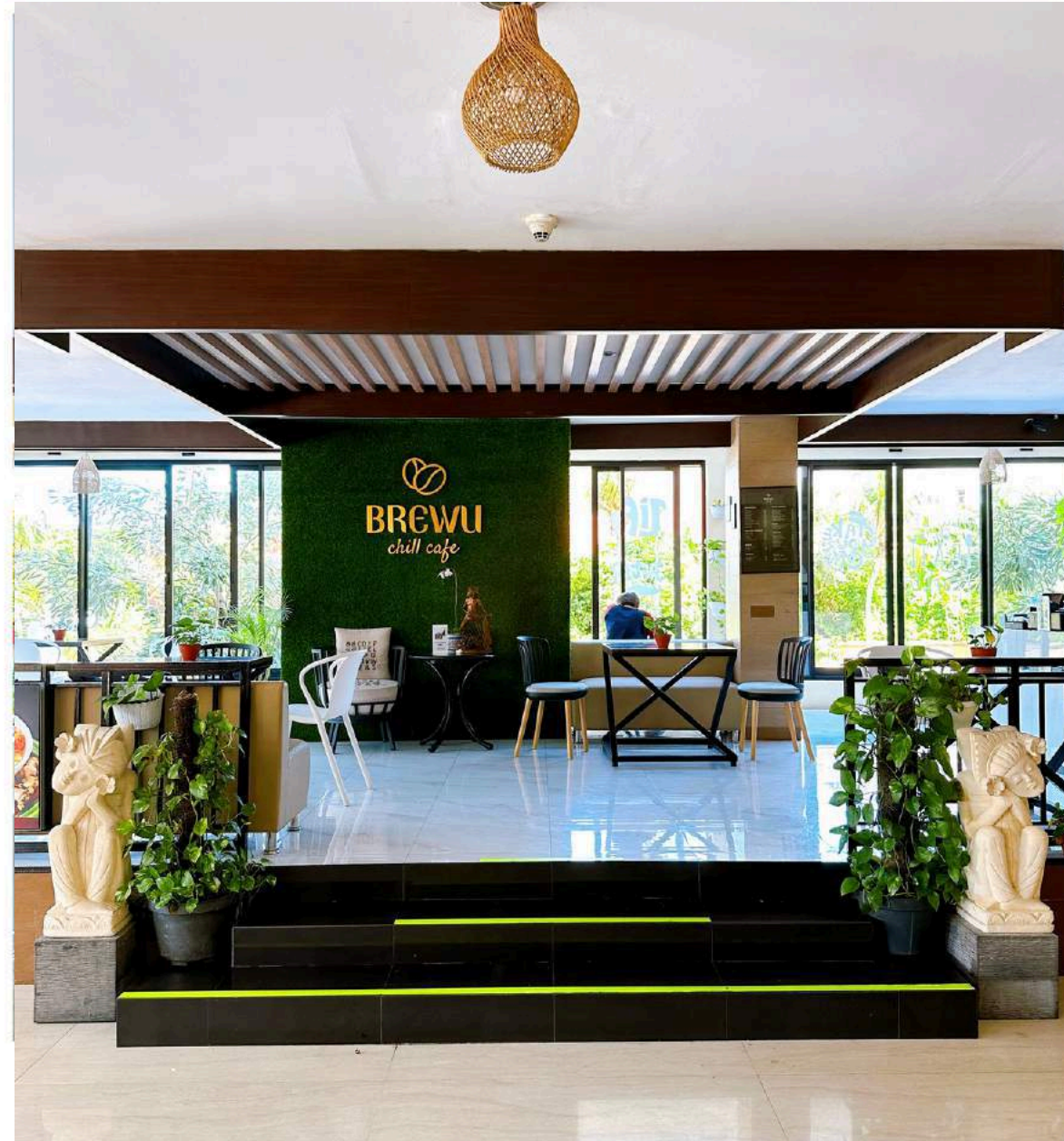


## Saung Dahar Balagra



Saung Dahar Balagra stands as a culinary gem in Bali, offering a comprehensive menu of authentic Indonesian cuisine. With over 40 different Indonesian dishes available daily, it's a place where you can embark on a flavorful journey across the Indonesian archipelago. Delight in their signature dishes, including Nasi Bogana, Nasi Gudeg, Nasi Liwet, Mie Nyemek, and Sop Buntut, along with the daily offering of Bakso Malang.

## **Brewu Chill Cafe**



Brewu Chill Cafe serves freshly grind coffee and speciality flower tea for an exoctic tea drinking experience. This Cafe also offers a wide variety of cold drinks. Now we serve TANAMERA Coffee. The Real Indonesian Coffee. Opening hours 7 am to 11 pm.



**For more information and reservations please contact:**

Sunset Road No. 88A, Kuta - Bali  
P. (0361) 846 8600 / 0851 5849 7899  
[www.atanaya.com](http://www.atanaya.com)

f @ 🎵 : atanayahotel